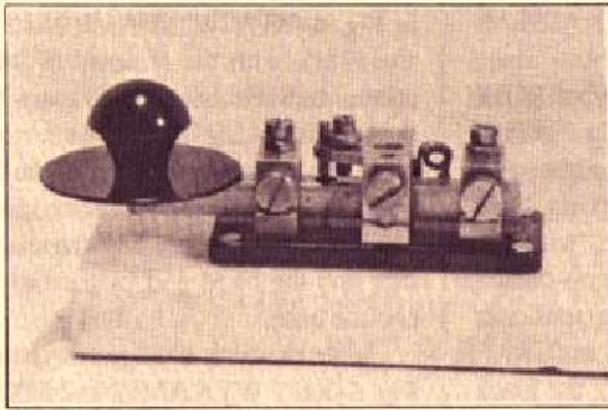
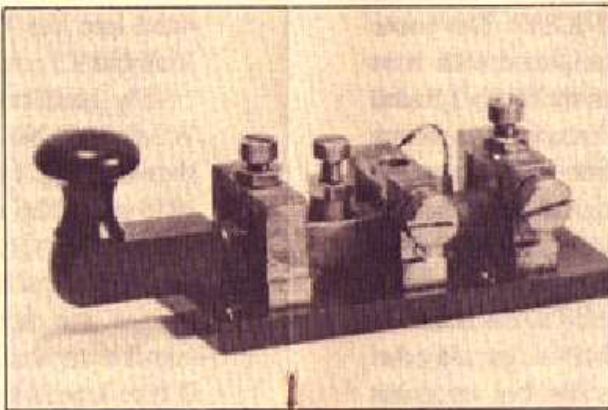


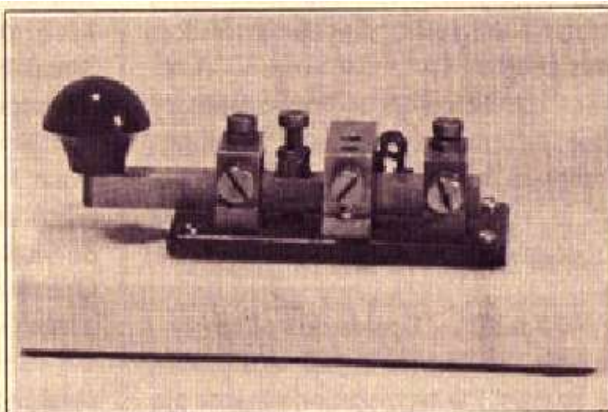
Evolution of the WT 8 AMP key.



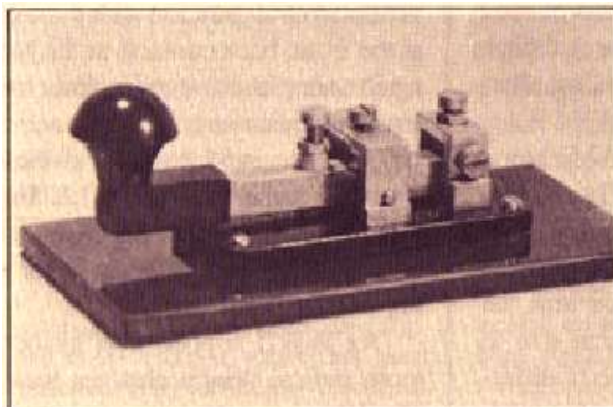
1. **WT 8 AMP N^o 2**
LMK & Co. 1940
P.O. type tensioner and taper bearings.
Navy fingerrest under knob.



2. **WT 8 AMP**
J.H. Bunnell & Co, New York, USA.
Brass.



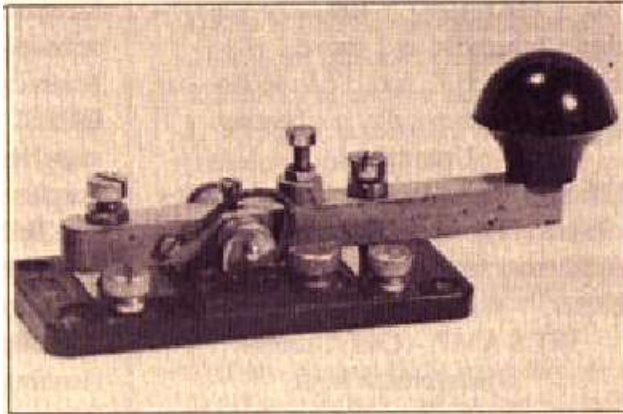
3. **WT 8 AMP N^o. 3 MK I**
WER 1940 - ZA 4605
Simple screw tensioner and parallel pin bearings.



4. **WT 8 AMP N^o. 2**
N.E.Co. 1941.
Two bridges.



5. **WT 8 AMP No. 2 C4** (Canada)



6. **WT 8 AMP No. 2 MK II**

ZA 2869 - PX1.

Conventional configuration, brass key lever, main contacts at the front.



7. **WT 8 AMP No. 2 MK II**

Navy fingerplate under knob.

No further identification.



8. **WT 8 AMP No. 2 MK II**

Bakelite key lever. Some of the produced Key W.T. 8 Amp No. 2 Mk.II (left) and Mk.III (below) were produced with a 5th fixing hole in the key base



9. **WT 8 AMP No. 2 MK III**

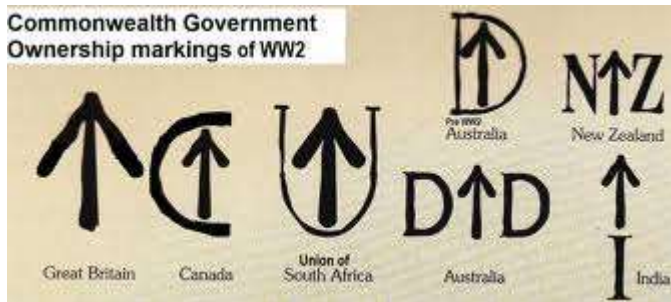
ZA 2865. Slanted, bakelite moulded bearings.



10. **WT 8 AMP №. 3**
 Canadian, with brass plate from
 Key and Plug Assebley No. 6



8. **S-R Cotel**
 made by G3SRK, Jack Sykes'
 company, Lingard Electronics



Commonwealth ownership
 equipment markings.